

Lot 15

The Arlingham



2 Bed +
Study



2 Bath



Garage



Image was produced prior to planning approval, statutory approval and commencement of construction and is subject to change. The information and image depicting interiors and exteriors are intended only as a guide and are not to be relied on as a representative of the final product.

The Arlingham is a downsizer's dream with two bedrooms with built in robes, a private ensuite plus a family bathroom and an open plan kitchen, dining and living space. This home offers the best of modern living with space to entertain both indoors and alfresco.

Floor Areas

Main Living Area	91.1m ²
Garage Area	20m ²



Alfresco Area	16.3m ²
Porch Area	4.6m ²
Total	132m ²

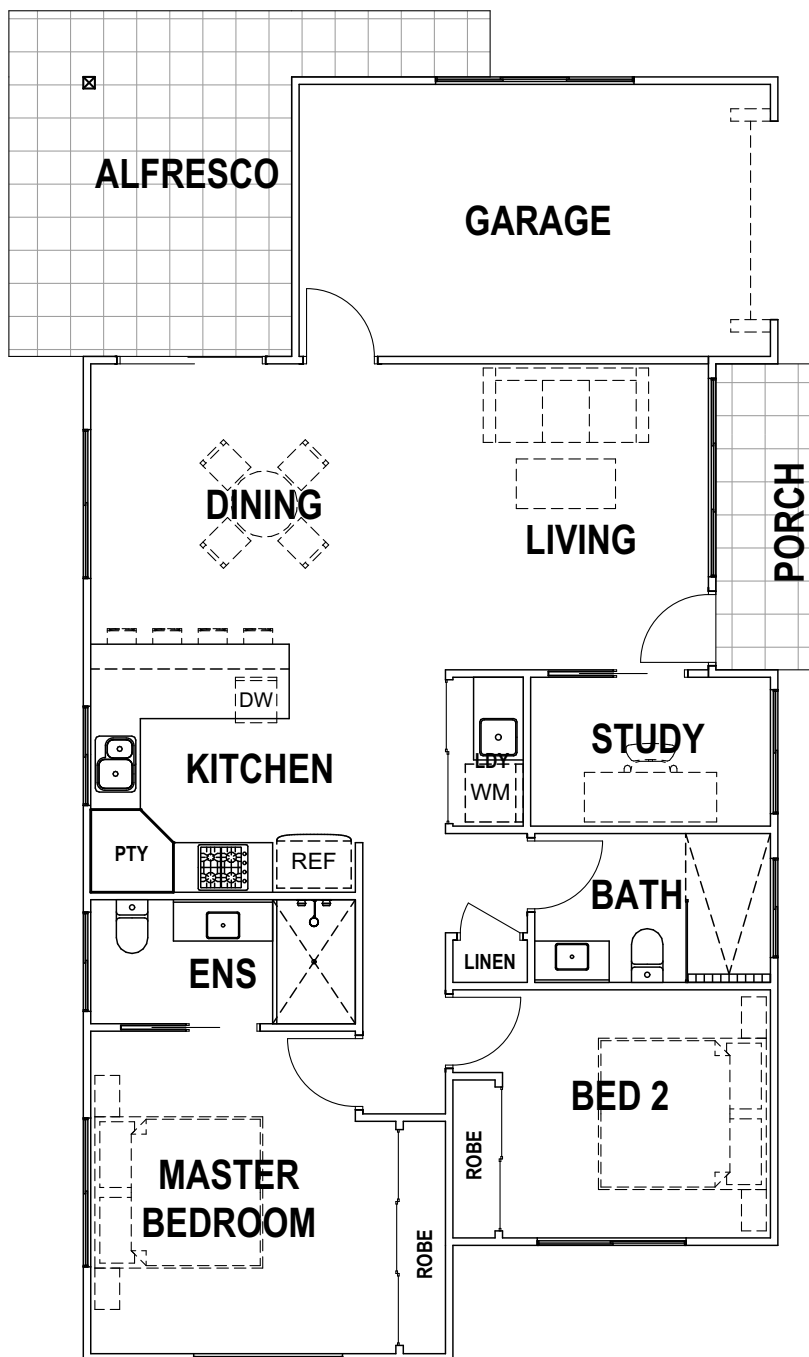


Image was produced prior to planning approval, statutory approval and commencement of construction and is subject to change. The information and image depicting interiors and exteriors are intended only as a guide and are not to be relied on as a representative of the final product.