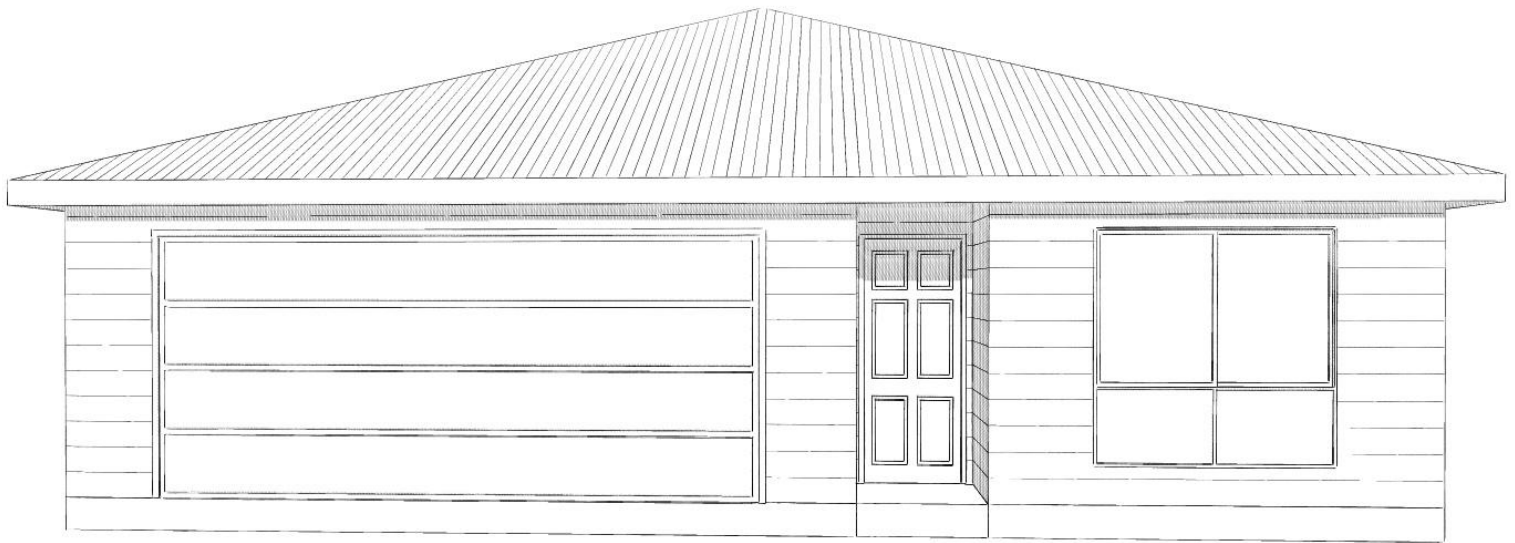


from \$289,000*

 236sqm  2 Bed + Study  2 Bath  2 Car



Artist Impression

Lot 30

19-51 Warral Road, West Tamworth, NSW 2340

Design Features

- Large home total size 144m²
- Keep 100% of any capital gain
- Reverse cycle air conditioner
- Wall oven and dishwasher
- Ceiling fans to bedrooms and living
- Gas or electric cooktop
- Easy-care timber look vinyl floors in living areas
- Carpets to bedrooms, tiled wet areas
- Fully insulated, energy efficient
- Built-in wardrobes
- Internal laundry
- On site caretaker
- No stamp duty or exit payments
- Government subsidy for land lease fees where eligible





Floor Plan – Lot 30

- Internal living 88.5m²
- Garage 41.3m²
- Alfresco/Porch 14.0m²

Total 143.8m²



*Land Lease Fees apply. GST Inclusive. We reserve the right to vary or change prices and specifications without notice. Dimensions are approximate only. All drawings and photographs are for illustrative purposes only.